



Chrissy Clawson <chrissy@chconservancy.org>

Project & People News

WeConservePA <ibeal@weconservepa.org>
Reply-To: info@weconservepa.org
To: chrissy@chconservancy.org

Thu, Feb 20, 2025 at 3:01 PM



PROJECT & PEOPLE NEWS

The Buck Hill Conservation Foundation protects 687.5 acres with the Metzgars Conservation Easement

The Buck Hill Conservation Foundation and **The Buck Hill Falls Company** are pleased to announce the Inn Site Swap was recorded on February 4, 2025. The Foundation exchanged its 11.7-acre Inn Site property for a **687.5-acre Metzgars Conservation Easement** on Company land. The Company is now once again the owner of the Inn Site, and the Foundation has increased land under its management to 1,712 acres. [Read More](#)



Troy Firth, President of Foundation for Sustainable Forests, Receives Pennsylvania Leopold Conservation Award



Troy Firth of Spartansburg has been selected as the 2024 Pennsylvania Leopold Conservation Award® recipient. The \$10,000 award honors farmers and forestland owners who go above and beyond in their management of soil health, water quality, and wildlife habitat on working land. Firth, who owns and

operates Firth Maple Products, was revealed as the award recipient at the Pennsylvania Farm Show in Harrisburg. [Read More](#)

130-Acre Camp Innabah Preserved Forever in East Vincent Township, Chester County by French & Pickering Creeks Conservation Trust

[French & Pickering Creeks Conservation](#)

[Trust](#) and the Eastern Pennsylvania Conference of The United Methodist Church are delighted to announce the completion of a voluntary land conservation agreement to preserve Camp Innabah's 130-acre property along Pughtown Road in East Vincent Township. A space that has



been a cherished center for community, outdoor recreation, and connection to the natural world for generations will never face the pressures of land development.

"After working with the Camp for several years to develop an agreement which balances long term preservation and recreational access with the safety of the Camp's guests, French & Pickering is excited to partner with the Camp and the community to permanently protect this natural treasure. We particularly appreciate the significant funding assistance from our State, County, and Municipal partners," said Karl Russek, Conservation Director for French & Pickering. [Read More](#)

Heritage Conservancy Preserves 60 Acres of Land in Bucks County in December

In December 2024, [Heritage Conservancy](#) preserved a total of 60 acres of Bucks County natural and farmland in three separate Conservation Easements. All of these easements closed in the same week! This brings our 2024 tally to 335 acres of conserved land. Conservation easements put in place by Heritage Conservancy allow private owners to protect their property for public benefit now and for generations to come. Our perpetual role helps keep

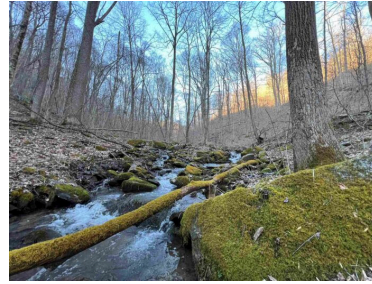
Bucks County and the surrounding area green and beautiful, protecting the natural areas, agricultural fields, and bucolic views that make this region special. These three properties are only our latest projects, contributing to the 16,000+ acres of land protected by Heritage Conservancy. [Read More](#)

Western Pennsylvania Conservancy Protects Two More Properties to Expand Popular Outdoor Recreation Areas in Fayette County

Western Pennsylvania Conservancy announced the purchase of two properties, totaling 97 acres, in Stewart Township, Fayette County that will be added to popular outdoor recreation and natural areas in the Laurel Highlands. [Read More](#)



A 44-acre forested property located near State Route 381 consists of limestone outcrops along the steep Youghiogheny River Gorge and a mature forest canopy of sugar maple, basswood, oak and shagbark hickory. The property is located within the **Upper Lick Run Natural Heritage Area**. The property has been added to the Conservancy's now 5,163-acre **Bear Run Nature Reserve**.



Another forested property, totaling 53 acres, is now officially part of **Ohioyle State Park**, which the Conservancy first purchased land in the 1950s that helped establish the park a decade later. The property is adjacent to the **Laurel Highlands Hiking Trail**, a 70-mile mountainous trail that runs along Laurel Ridge in the Laurel Highlands, the property will protect the viewshed for hikers experiencing this section of the wilderness trail that runs through the state park, near Mile Marker 3. The property hosts important habitat for threatened and sensitive bird and other wildlife species.

20 Acres Preserved Forever by French & Pickering Creeks Conservation Trust in Charlestown Township, Chester County



French & Pickering Creeks Conservation Trust is pleased to announce the finalization of a voluntary land conservation agreement to permanently preserve Drew and Marjorie Alleva's 20-acre property on Honeysuckle Lane in Charlestown Township. [Read More](#)

The Lebanon Valley Conservancy safeguards agricultural land in Union Township

The Lebanon Valley Conservancy (TLVC) recently preserved two farms along Fort Swatara Road in Union Township, near Swatara State Park, Fort Indiantown Gap, and within the Kittatinny Ridge Sentinel Landscape. The land in and around the Kittatinny Ridge is a strategic area of focus for TLVC, serving as a crucial corridor for songbird migration and vital habitat for rare wildlife. [Read More](#)



Farm fields on Yezdimir property



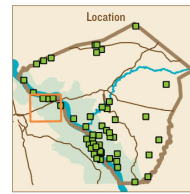
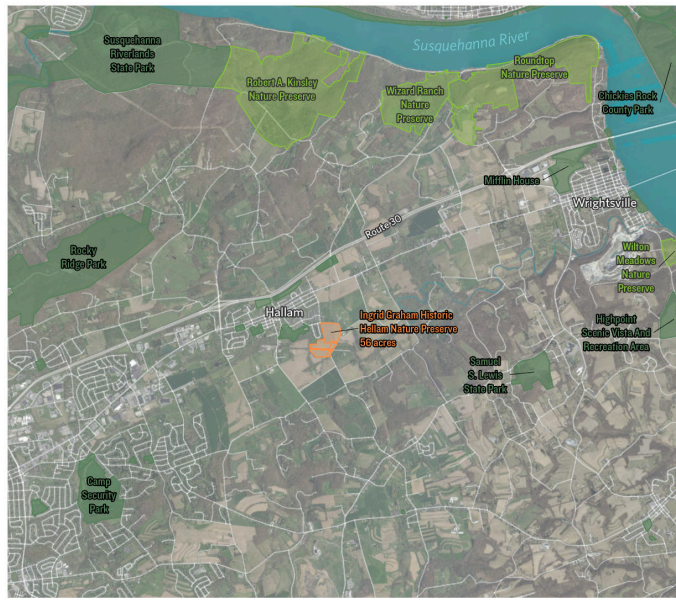
Pond and fields on Brehm property

Lancaster Conservancy Announces Acquisition of Historic Hellam Preserve in York County

Lancaster Conservancy is excited to announce the acquisition of a 56-acre property currently known as the Historic Hellam Preserve located in both Hallam Borough and Hellam Township in York County. The property includes floodplain forest, meadow, a section of Kreutz Creek, and agricultural land. The preserve also includes several historic structures including a renovated 19th century bank barn and farmhouse and a restored 18th century log cabin. The preserve is being donated to the Conservancy by the Graham Family who acquired the property tract by tract and lovingly restored the historic structures. In honor of Ingrid Graham whose vision led to the development of what is a cultural, historic, and conservation site, the Conservancy will rename the preserve the Ingrid Graham Historic Hellam Nature Preserve. [Read More](#)

Ingrid Graham Historic Hellam Nature Preserve Acquisition Map

LANCASTER
CONSERVANCY



Ingrid Graham Historic Hellam Nature Preserve
 56 total acres
 47 acres, Hellam Township, York County
 9 acres, Hellam Borough, York County

Map data ©1972-2023 © Lancaster Conservancy 2025. Data sources: FEMA, USGS, and Conservancy. York County, PA County. This document is for informational purposes only. It does not represent a legal survey. While every effort has been made to ensure the data are accurate and reliable, the Lancaster Conservancy cannot assume liability for any damages caused by any errors or omissions in the data, nor as a result of the data's function on a particular system. The Lancaster Conservancy makes no warranty, expressed or implied, nor does the fact of distribution constitute such a warranty.

Transit leader Bill Webster takes helm at Chestnut Hill Conservancy board



The **Chestnut Hill Conservancy** has named Bill Webster, SEPTA's Chief Communications Officer, as the new president of its board of directors, the organization announced.

Webster succeeds Eileen Javers, who led the organization for eight years and will remain on the board and executive committee. The appointment comes as the conservancy works to balance historic preservation with environmental conservation in Philadelphia's Chestnut Hill neighborhood.

"Chestnut Hill is unique in that it's a walkable, engaging neighborhood where people genuinely connect," said Webster, who moved to the area in 2018 with his partner, Jeff Dugan. "The key is ensuring that people understand their role in shaping what happens next." [Read More](#)

Headlines

[Laurel Caverns owner explains why it makes sense to be Pennsylvania's next state park](#)
 Echo-Pilot

[Improving Access for all Pennsylvanians and Visitors](#)
 Department of Conservation and Natural Resources

England's Largest Bird Sanctuary Grows by 30%: 'It's incredible, the place just swarms with birdlife'
Good News Network

Newsletter Submissions

Have an item that you would like to include in an upcoming *Project & People News* newsletter?

Submit your news to Irina Beal at ibeal@WeConservePA.org.

Conservation Jobs

Interested in working in conservation in or near Pennsylvania? Check out the [WeConservePA Job Board](#), where we compile an up to date list of employment listings from land trusts and other conservation-affiliated organizations across the commonwealth.

WeConservePA helps people care for and wisely use natural resources in order to foster healthy, prosperous, and secure communities. WeConservePA envisions future generations enjoying and using—undiminished—the forests, farms, parks, urban gardens, and other open spaces that safeguard our drinking water, prevent flooding, protect wildlife, provide recreational and economic opportunities, and preserve scenic beauty.

DONATE



WeConservePA | WeConservePA.org

WeConservePA | 610 N. 3rd St. #301 | Harrisburg, PA 17101 US

[Unsubscribe](#) | [Update Profile](#) | [Constant Contact Data Notice](#)



Try email marketing for free today!